

Get Faster, Meaningful Insights From Your Day- to-Day SAP ERP Data



Angles

reporting
from insightsoftware



insightsoftware



Access SAP ERP Data With Ease by Using Angles for SAP

Your SAP enterprise resource planning (ERP) software has a wealth of data. But its complex nature makes it difficult for your teams to access, understand, and use the data efficiently and productively. Without data insights, you lack a clear understanding of your organization's operations. And ad hoc or custom report requests to the IT team only slow down your employees and the reporting process.

Transform the critical data in your SAP ERP tools into actionable insights with Angles for SAP from insightsoftware. **Give the power of operational analytics and business intelligence (BI) to the people who need it most—your business users.**

Simplify the Complexity of SAP ERP Data

Rid your teams of SAP data complexity. Enrich the data in your SAP ERP with over 600 calculated fields to analyze your supply chain and financial data. Take advantage of unique, built-in, cross-process intelligence that makes your ERP transactional data easy to understand.

Transform Your SAP Data Into Insights for Business Users

Give your users freedom over their analytics. Enable them to find information quickly using natural language search. With insights provided in easy-to-understand business concepts, your users can autonomously investigate the data to measure performance, analyze issues, and take action.

Deliver Information Straight to Your BI Platform

Shorten report design time and get faster insights from BI tools. Using the intuitive, customizable reporting interface, business users can create a report or dashboard right in their BI tool of choice.

“We use Angles for SAP for nearly every process... It empowers our operating companies with self-service BI and shows them where they can save a lot of money.”

- **LEONARD STEIN**, Technology Specialist at Heineken International



Gain Insights Across Your Business

Push past data silos. Through cross-process analytics, see what's happening across your business in real time. Your business users can analyze processes horizontally across the entire value chain—from purchasing, production, warehousing, and sales to financial accounting and controlling (FI/CO). They can act swiftly to control outcomes and drive meaningful operational and financial changes.



“Angles for SAP and the KPI Dashboard help the management of the breweries to get a better grip on the overall performance of the supply chain, which will ultimately help [...] service [...] domestic and international customers better against lower cost.”

- **FRED HOLVAST**, Logistics Director at Heineken Netherlands





Find Answers to Ad hoc Questions Without IT

Skip the predefined reports from IT that slow down your operational reporting process. Through the self-service user interface, your business users get the answers they need right from their laptop or mobile device. By using the drill-down capabilities, they can dig into and understand the root cause of issues and data discrepancies.

Get Business Analytics Without the Data Headaches

With Angles for SAP, you get:

- › Out-of-the-box templates
- › Easily customizable dashboards
- › Process model reporting
- › Drag-and-drop angle building
- › Drill-down functionality

“We never considered implementing SAP S/4HANA without Angles for SAP. Our upgrade simply would not have been as successful without it.”

- STEVE HANKINS, CFO at Morgan Foods International



Utilize Hundreds of Out-of-the-box Report Templates

Give your team a head start with Angles for SAP's **pre-built content**. Quickly identify bottlenecks and gain actionable insights with no-code, self-service templates.

Answer critical questions across your SAP landscape with our out-of-the-box templates, including:

Supply Chain

- > Material Master Data
- > Stock Shortages
- > Polluted Orders
- > Supply Demand Matching
- > Open Production Orders
- > Work Order

- > "Do we have any bottlenecks affecting our ability to supply current and future demand?"
- > "Do we have enough incoming supply?"

Finance

- > Asset Postings
- > Cost Center
- > Sales Margin
- > Spend Analysis
- > Days Payable Outstanding
- > Days Sales Outstanding

- > "How much money have we lost due to misallocated discounts?"
- > "How much cash is tied up in excess inventory?"

Human Capital Management

- > Employee Info
- > Payroll Result
- > Retention
- > Staffing
- > Employee/Manager Ratio
- > Working Times

- > "Do we have enough resource coverage?"
- > "Are we retaining our best people?"

Quality Management

- > Blocked Stock Movements
 - > Quality Inspection Stock
 - > Defects Analysis
 - > Inspection Characteristic Result
 - > Inspection Point
 - > Batch
-

- > "What inspection methods are we using for our latest batch?"
- > "What is causing the defects in our current stock?"



Give Users Confidence to Interact With the Data

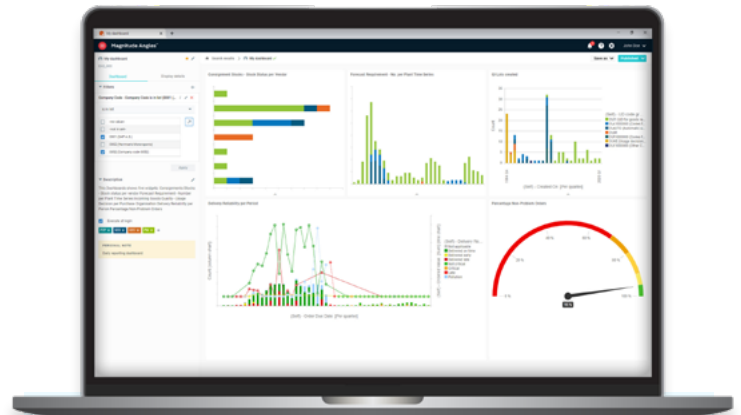
Regardless of SAP experience or role, users can:

- Quickly find information with a simple search.
- Identify pain points and bottlenecks early and act on them before they impact the bottom line.
- Create detailed action lists that highlight operational issues, exceptions, and bottlenecks.
- Easily export enhanced data to third-party BI tools.
- Understand the root cause of issues.
- Enrich views with information from other process areas.

Increase your confidence in your SAP ERP and its data quality to create trustworthy reports and reduce time spent on reconciling results.

See how Angles for SAP can help transform your business and extract real ROI for your ERP investment.

[Learn More >](#)



Create Insights You Can Act On

Optimize your ability to dig into the details:

- Pinpoint stock shortages, delays, and their root causes before picking and shipping.
- Understand lead times at each stage of the supply chain and identify consistent delays and bottlenecks.
- Remove wasted effort, inventory, and cash.
- Discover unnecessary purchases and production, slow-moving items, obsolete inventory, stock claimed by polluted orders, dead stock, and so on.
- Control risks and process compliance issues such as Segregation of Duty.
- Highlight purchases that can be delayed.
- Reduce partial shipments, late payments, and overtime.

About insightsoftware

insightsoftware is a leading provider of reporting, analytics, and performance management solutions. Over 30,000 organizations worldwide rely on us to support business needs in the areas of accounting, finance, operations, supply chain, tax, budgeting, planning, HR, and disclosure management. We enable the Office of the CFO to connect to and make sense of their data in real time so they can proactively drive greater financial intelligence across their organization. Our best-in-class solutions provide customers with increased productivity, visibility, accuracy, and compliance.

Learn more at [insightsoftware.com](https://www.insightsoftware.com).



insightsoftware

US +1 919 872 7800

UK +44 (0) 845 467 4448

AUS +612 8985 7777

[insightsoftware.com](https://www.insightsoftware.com)